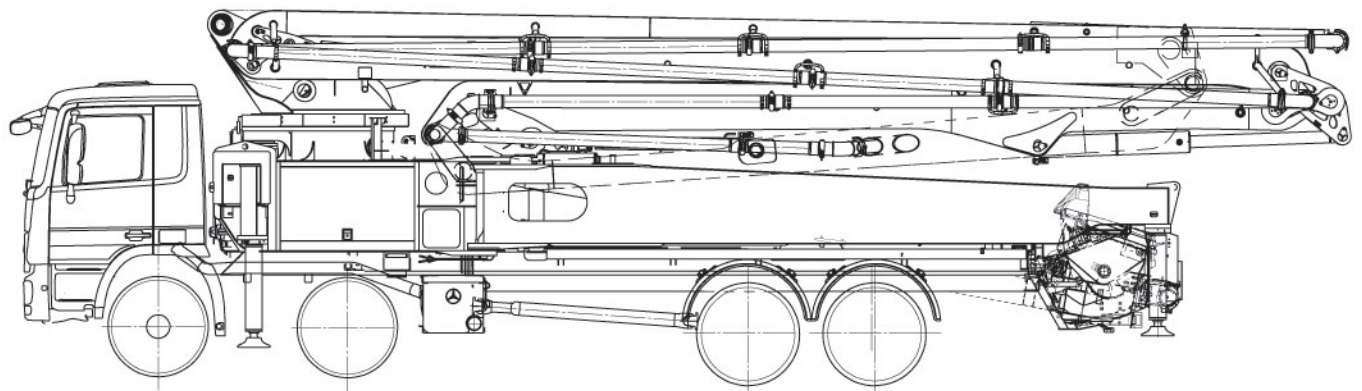
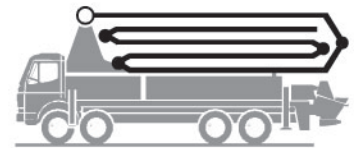


Truck-mounted concrete pump

BSF 53-6.15 HLS

Output up to 150 m³/h
Delivery pressure up to 85 bar



Technical data for concrete pump

	Model	BSF 53-6.15 HLS
Rod side	Output	—
	Delivery pressure	—
Piston side	Output	148 m ³ /h
	Delivery pressure	85 bar
Transfer tube		S transfer tube (S 2318)
Hopper		RS 907L Approx. 700L
Delivery cyl. fl		250mm
Stroke of delivery cyl.		2100mm
Filling height		approx. 1.35 m
Control system		Free-Flow- Hydraulics (FFH)

Technical data for boom

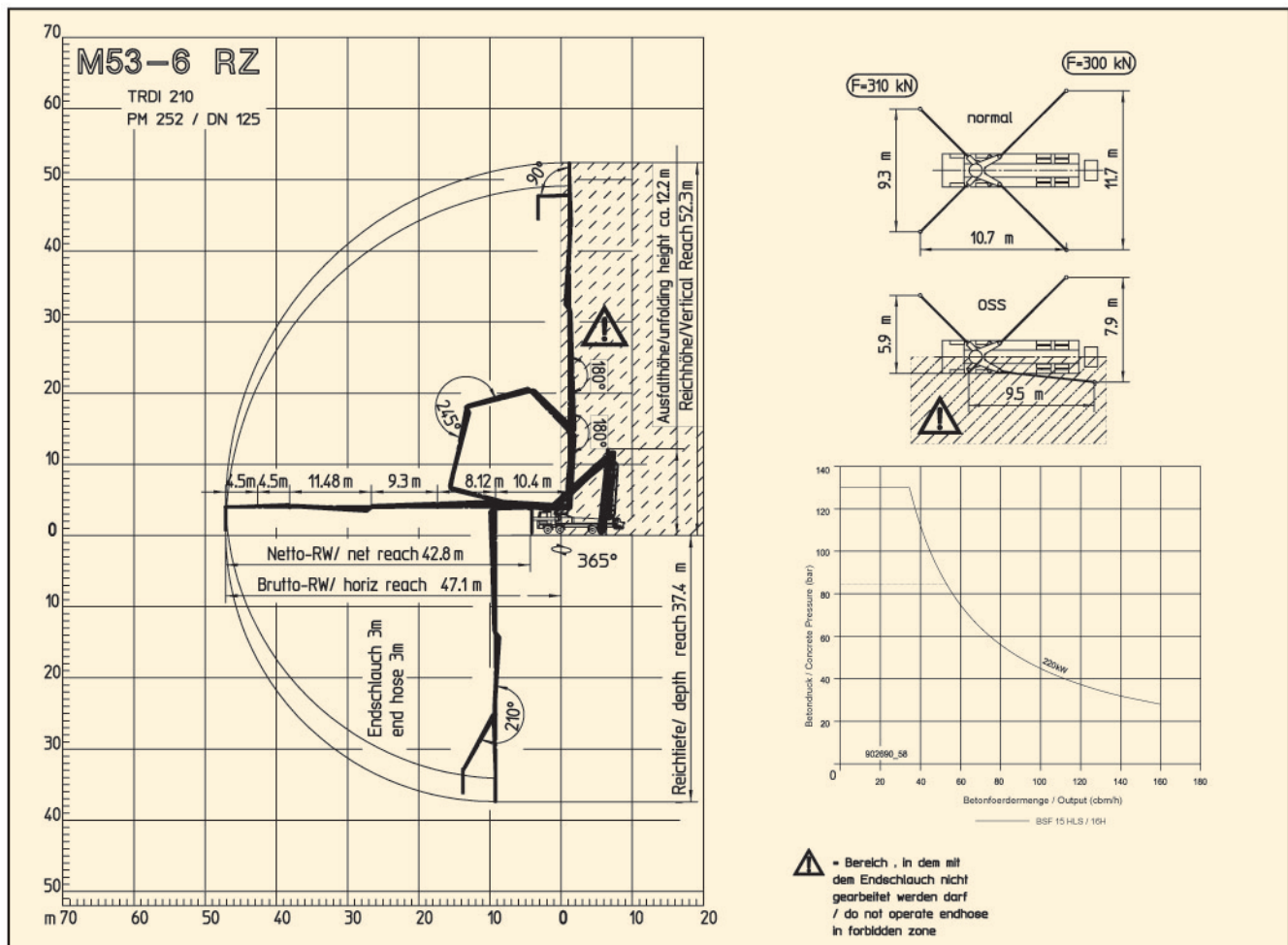
Model	BSF 53-6.15 HLS	
Reach height	52.3 m	
Horizontal reach	47.1 m	
Reach depth max.	37.4 m	
Max. Support leg force	Front:310 KN Rear:300KN	
Unfolding height	12.2 m	
End hose length	3 m	
Delivery line	DN 125,max. 85 bar	
Slewing circle	365°	
Number of arms	6	
Folding system	Roll-Z-folding(RZ)	
Hydraulic control	Modul Boom Control (MBC)	
Remote control	Radio remote control	
Support	Front:	Telescoping, diagonally
	Rear:	Swinging

* Dimensions, weight and engine power depend on truck model.

All data maximum theoretical.

Right to make technical amendments and interpretation reserved by Putzmeister.

Reach information diagram, Support, Performance diagram



• Standard version / ○ Optional extras

- Water tank volume approx.600L
- Delivery cylinder Ø250mm
- BSF:RS 907A/907L Hopper with S2318N transfer tube
- Support plates 4× in magazine
- MBC
- Delivery line DN 125(5.5"), 133×4
- G64C PTO gearbox
- End hose 3.0m, DN 125(5.5")
- Tool box
- Spray hose 10m with nozzle
- Painting: Arm assembly RAL 3020, signal red
- Painting: Pump RAL 9016; white
- Rubber collar for hopper
- Protected cover for plunger cylinder
- Ergonic pump system
- S-TUBE 2318 W/90MM SHAFT
- Output regulator
- Central grease lubrication hand pump for hooper
- Agitator Safety switch off-electrical
- Cleaning port and catching basket
- Cable remote control
- Remote control cable 40m
- OSS one side support
- Central lubrication CP+Boom, electr.
- Radio remote control